



ARLINGTON HIGH SCHOOL



CHOIR HANDBOOK 2008-2009

DIRECTORS

Dinah Menger

Laura Pease

Jodi Hill

2008 – 2009 Arlington High School Choral Department Handbook

Table of Contents

[Welcome](#)

[Course Descriptions](#)

[Varsity Choirs](#)

[Non-Varsity Choirs](#)

[Extracurricular Ensembles](#)

[Academic Classes](#)

[Contact Information](#)

[Student Code of Conduct](#)

[Attendance Policy](#)

[Grading](#)

[Rehearsals](#)

[Absences](#)

[Concerts](#)

[Promptness](#)

[Music and Uniforms](#)

[Rehearsal Etiquette](#)

[Daily Expectations](#)

[“POINTS TO ME” Program](#)

[Concert Etiquette](#)

[Concert Tickets](#)

[Arlington Music Enrichment Program \(AMEP\)](#)

[Calendar of Events](#)

[Arlington High School Choir Rules & Regulations](#)

[Consequences](#)

[Signature Page](#)

Welcome to Arlington High School Choral Department's 2008-2009 Season

Greetings to all parents, friends, and choristers! With your help and support, we look forward to a successful year of music making!

The Arlington High School Choral Department thrives on a philosophy of and commitment to tradition, musical excellence and pride in all that we do. This philosophy and commitment depends on the cooperation of ALL Choral students, parents and friends. Please understand that the success of a quality choral program demands that EACH member must claim personal responsibility and "ownership"! You have the power to do GREAT THINGS!

It is with pleasure and pride that we present this Choral Handbook to answer most of your questions and to inform you of the goals, expectations, calendar dates, etc. Please read the Handbook and have a parent or guardian sign and return the contract on the back page.

Dinah Menger, Choir Director

Laura Pease, Assistant Director

Jodi Hill, Assistant Director

Please feel free to call the Choir Office with any questions or concerns at (817) 459-2128. You may also email us at:

dmenger@aisd.net

lpease@aisd.net

jhill12@aisd.net

For general information about the Arlington High Choir department, visit our Web site at www.ahschoir.org.



Course Descriptions

VARSITY CHOIRS

Colt Chorale (A Day / 3rd Period)

Mixed choir setting (SATB) performing selections from all musical periods and styles.

Colt Chorale is our advanced varsity mixed choir. This is an auditioned choir of sophomores, juniors and seniors with previous years of choral training, excellent sight-reading skills, a consistently successful grade history, and a self-disciplined work ethic. This is our primary performance ensemble and its pace and expectations are intense. All members are required to attend one 1-hour sectional per week outside of class. Members are encouraged to study voice privately and are required to participate in the TMEA All State Choir audition process. All members are expected to retain grade eligibility and to maintain a professional standard of character representing the excellence and tradition of Colt Chorale.

Dinah Menger, Director

Select Women's Ensemble (B Day / 6th Period)

Treble choir settings (SSAA) performing selections from all musical periods.

Select Women's Ensemble is our advanced varsity women's choir. The choir is made up of sophomore, junior and senior women who pass the audition. Members must have previous years of choral training, a good grade history, excellent work ethic, and the ability to sight-read and move quickly through intense and fast-paced rehearsals. As a varsity choir, expectations are also intense. All members are required to attend one 1-hour sectional per week outside of class. Members are encouraged to study voice and to participate in the TMEA All State Choir audition process. Grade eligibility and a professional standard of character are expected of members in the Select Women's Ensemble.

Laura Pease, Director

Choraliers (B Day / 7th Period)

A 22-member performance choir (SATB) performing Vocal Jazz, Musical and Pop selections, madrigals and chamber music. The Choir is made up of sophomore, Junior and Senior men and women who pass the audition. The audition includes a musical theater selection, choreography, and a TMEA All State sight-reading selection. Members are required to purchase a uniform, dance shoes and a choreography fee of \$100 (\$50 for the Fall Show and \$50 for the Spring Show). Members are required to be in Colt Chorale. Members must be mature and dependable due to the excessive amount of performances throughout the community both during the school day and many evenings. Members are expected to keep their grades above passing and are responsible for making up all school work missed due to Show Choir Gigs.

Dinah Menger, Director

Stephanie Locker Hall, Choreographer

****Varsity choirs are STRONGLY encouraged to audition for the Texas All State Choir****

**Colt Chorale and Select Women's Ensemble members are required to attend a one-hour sectional PER WEEK for a grade. The students arrange the specific time and location of the sectional and roll is taken. This is turned in to Mrs. Menger for attendance.

NON-VARSITY CHOIRS

AHS Men (A Day / 2nd Period)

A TTBB choir made up of freshman, sophomore, junior and senior men, performing all styles of music. This is a new choir at Arlington High School, and we are VERY excited about it. The choir will focus on vocal pedagogy, sight-reading improvement, choral etiquette and theory. All members are required to attend all Choral concerts and UIL Concert & Sight-reading Contest if eligible.

Dinah Menger, Director

Kantorei (B Day/ 5th Period)

An SSA choir made up of mainly sophomore, junior and senior women. Choristers train for advanced placement in Varsity Choirs while learning and performing all styles of music. This is also a new and exciting choir for us this year. Members will perform at UIL Concert & Sight-reading Contest if eligible and are required to perform at all Choir Concerts throughout the year. This choir also reinforces sight-reading skills, good choral etiquette, music theory, dependability, musicianship, and schoolwork.

Dinah Menger, Jodi Hill, Laura Pease, Directors

Freshmen Treble (A Day/1st Period)

Made up of freshmen girls. Singers train for future advanced placement in Varsity Choirs while learning and performing all styles of music. Members will perform at all Concerts and at the UIL Concert & Sight-reading contest if eligible. This choir reinforces good sight-reading skills, music theory, choral etiquette, dependability, musicianship and schoolwork.

Jodi Hill, Dinah Menger, Laura Pease, Directors

EXTRACURRICULAR ENSEMBLES

Take Note! (After School - TBA)

This is a SATB group made up of sophomore, juniors, and seniors. It is a non-varsity show choir which requires the same audition as for Choraliers. Members are required to purchase a uniform, dance shoes, and are assessed a \$50 choreography fee. Members must be dependable for rehearsals and performances, as they will perform throughout the school district and community. Members must keep their grades above passing to stay in the group.

Jodi Hill, Director

Vivace! (After school - TBA)

A treble choir setting (SSA) made up of incoming auditioned freshmen. This is a performance choir and requires the same audition as for Choraliers. They will perform small ensemble music as well as choreographed numbers. Members are required to purchase a uniform, dance shoes and are assessed a \$50 choreography fee. Members of Vivace! must be in Freshmen Treble choir. Members must be dependable as they will have some performances throughout the school district and community. Members must keep their grades above passing to stay in the group.

Laura Pease, Director

Chamber Singers (Wednesday 3:00-4:30)

A mixed choir setting (SATB) made up of auditioned sophomores, juniors and seniors. This is an intense ensemble, performing very challenging a cappella chamber music. The group is self-taught and self-directed and performs at all concerts. Members are required to prepare all music and to attend all rehearsals.

Dinah Menger, Director

Horsemen (After school-TBA)

A tenor/bass setting (TTBB) made up of freshmen, sophomores, juniors and seniors. This is an auditioned choir and requires the same audition as for Choraliers. The group works on music ranging from Barbershop, jazz, classical to pop and Broadway. Members are required to attend all rehearsals and to prepare all music.

Dinah Menger, Director

ACADEMIC CLASSES

Music Theory (B Day / 8th Period)

This class is made up of advanced music students and teaches the fundamentals of music theory in preparation for college music courses. Students will study and be tested on music theory, ear training and composition. We are hoping this course will be labeled AP before the end of the year, and students in this class will be highly encouraged to take the AP exam on May 4. Students will be given a list of required materials on the first day of classes.

Laura Pease- Instructor

What makes a Varsity Choir member??

- 1) Varsity members attend everything all the time (All choir and social functions)
- 2) Varsity members ask lots of questions.
- 3) Varsity members are leaders in their sections.
- 4) Varsity members follow rules and stay out of trouble.
- 5) Varsity members audition for everything.
- 6) Varsity members take voice lessons and practice at home.
- 7) Varsity members come to rehearsals prepared.
- 8) Varsity members have their music and pencil AT ALL TIMES!!!
- 9) Varsity members MARK THEIR MUSIC!!!
- 10) Varsity members are on time all the time!!!
- 11) Varsity members can sight-read anything and everything and work on their sight-reading all the time.
- 12) Varsity members pay attention and are on task for the duration of each rehearsal and performance.
- 13) Varsity members memorize all their music correctly and precisely.
- 14) Varsity members take care of their calendars and look ahead for conflicts.
- 15) Varsity members call the choir room when they are running late.
- 16) Varsity members are amazing OUTSIDE the choir room!!
- 17) Varsity members are ELIGIBLE and take care of grades.
- 18) Varsity members attend sectionals with music and work ethic.
- 19) Varsity members take care of their choir family-NO GOSSIPING!!
- 20) Varsity members are COUNTER-CULTURAL!!! "Say no to stupidity!!!"

Contact Information

Numbers to know:

Choir Room Office: (817) 459-2128

AHS Main Office: (682) 867-8100

Emails to know:

Mrs. Menger dmenger@aisd.net

Mrs. Pease lpease@aisd.net

Ms. Hill jhill12@aisd.net

Web sites to know:

AHS Choir www.ahschoir.org

Charms Music www.charmsmusic.com

EVERY DAY IS AN AUDITION FOR FUTURE CHOIR PLACEMENT!!! MAKE THEM COUNT!!

Student Code of Conduct

ATTENDANCE POLICY

Unlike other academic classes, your grade in choir is based largely on daily participation. Therefore, it is impossible to “make up” missed classes. Unexcused absences from class rehearsals, sectionals, dress rehearsals, and concerts will severely lower your grade. Be there!!! Weekly assessment grades are based on enthusiasm, level of involvement, work ethic, having all required materials (music, pencils), attendance, and musical ability.

GRADING

Grades will be based on:

70% TEKS (Texas Essential Knowledge and Skills) as outlined below

30% Concerts

Adjustments to grades will be calculated as follows:

Average of all written and oral tests

Failure of daily TEKS objectives (-3 points per day) i.e. Rehearsal technique, attitude, preparation

Failure to provide needed supplies (-10 points per day) i.e. Music, Binder, Pencil, Water

Consumption of Gum or other food items except water (-10 points)

REHEARSALS

Rehearsals are course requirements and are integral to our success. Students will be given adequate notice of all extra rehearsals, sectionals and activities. These rehearsals are necessary, but every effort will be made to minimize the amount of before and after school time needed. Each student is expected to attend rehearsals, sectionals and activities. Extra rehearsals will be called near Concerts and Contests.

ABSENCES

- 1) Absences and tardiness for concerts will be excused in the case of medical emergency or death in the family ONLY. Please call and leave a message on the Choir Room phone if any of these incidents occur (817) 459-2128. *### Concert absences must be made up by writing a Composer report and attending two (2) other concerts.*
- 2) WORK DOES NOT CONSTITUTE AN EXCUSED ABSENCE. Check your Choir concert schedule now and plan ahead.
- 3) In the event of a conflict with another scheduled school activity, it is the responsibility of the STUDENT to notify the sponsors of the conflicting activity. The sponsors will determine student's obligation.

CONCERTS

Concerts are the ultimate evaluation of many weeks of hard work and preparation. **ABSENCE FROM A CONCERT WILL BE A 30 POINT DEDUCTION!!!** Therefore, an unexcused absence will lower a student's grade considerably. Students and parents are responsible for keeping up with dates and times of activities scheduled in the choir calendar. *If a concert is missed, the student may only make up the absence by writing a Composer report and attending two (2) other concerts.*

PROMPTNESS

We, the directors, assume that you, the student, are present in our classes and in the Choir program because you want to be here. Therefore, we expect you to report to class on time with your music, pencils and enthusiasm. Walking in late to a rehearsal or running to your seat as the bell rings is disruptive and erodes the focus. **BE ON TIME.**

MUSIC AND UNIFORMS

You will be responsible for a choir uniform and choral octavos throughout the year. Just as you are expected to return textbooks to the school, we expect you to return your music and uniform to the choir department. Your music should be returned with all pencil markings erased and all pages intact. Your choir uniform should be returned **DRY CLEANED** and in excellent condition.

Please take care of things to avoid fines or replacement fees. Always write your name on the front of your music and label your uniform. Uniforms turned in after the due date will be assessed a \$10.00 additional fee. Uniforms turned in not cleaned and/or not in the dry cleaning bag with tag attached will be assessed a \$10.00 additional cleaning fee.

MUSIC FEE-----\$50

***THE CHOIR FEE IS REQUIRED OF EVERY STUDENT ENROLLED IN A CHOIR CLASS. THIS FEE COVERS UNIFORM RENTAL AND UPKEEP, MUSIC SUPPLIES, BLACK BINDER, PENCIL AND UNIFORM CHOIR SHIRT.** We understand that there may be a hardship from time to time with this fee. If you need to pay it on a payment plan, then please contact Dinah Menger (dmenger@aisd.net or 817-459-2128) before Get Fit day (see Calendar), which is when fee payment is due.



REHEARSAL ETIQUETTE

Positive Attitude: Come to rehearsal with the attitude that hard work does pay off! Excellence is achieved with an open and hard working mind. Leave other classes and problems outside the Choir Room doors so that our music goals can be the focus of each rehearsal.

Posture: Your body is your instrument. Use it properly for singing. When you stand, feet should be slightly separated, shoulders straight, rib cage fully extended, face engaged. When sitting, use the front part of the seat and legs should be slightly forward for balance. Do not cross your legs.

Supplies: It is critical that you bring your MUSIC and PENCIL to EACH rehearsal. Just as you would take a textbook to class, bring your music to choir. All choir members will need a DAILY BINDER, and Varsity Choirs will also need a BLACK BINDER for special performances. Get your music hole-punched and in the daily binder ASAP. 10 POINTS OFF FOR LACK OF SUPPLIES. It is also critical that you have WATER at each rehearsal. Singing for 90 minutes is vocally, mentally, and physically taxing. Hydrate. PLEASE PLACE BACKPACKS AT THE FRONT OF THE CHOIR ROOM AND ONLY BRING YOUR MUSIC, PENCIL AND WATER TO YOUR CHAIR.

Concentration: The best choir rehearsals move quickly. To accomplish this, each choir member must be completely attentive at all times. Even when your section is not singing, you must listen and be ready to jump back in.

Respect: When many people work closely on a musical project, it is important to maintain respect for each other. Choral music requires the focus of musicianship, as well as the emotions. Be sensitive to the feelings of others in the group. TREAT OTHERS AS YOU WANT TO BE TREATED.

Talking: Don't! It distracts you and everyone else. Choir rehearsals are for using the vocal mechanism to sing and harmonize. When you talk, you are not rehearsing properly. It is very unprofessional and wastes time.

Entering/Exiting: Make sure you are ready to warm up before the tardy bell rings! Our beginnings set the pace and standard for each rehearsal. If you must get up for any reason, wait until there is a pause in the rehearsal. When re-entering the choir room wait until there is a pause. It is impolite to come in to the middle of a working rehearsal. Always wait outside doors and listen for a break.



DAILY EXPECTATIONS

- 1) Be on time! **DO NOT BE TARDY!** If you are on time, you are late. If you are early, you are on time!!
- 2) Be in your assigned seat with all supplies when bell rings. **NO SUPPLIES....10 POINTS OFF**
- 3) Do not talk during rehearsal. When you talk, you distract and ruin our focus. Do not be a distraction. **NO CELL PHONES!!!**
- 4) Be ready physically and mentally to do your best at each rehearsal. Be willing to **TRY!!**
- 5) Be positive! Love the challenge! Be a supportive team member.
- 6) Please bring water. You and your voice are important. Keep your vocal mechanism hydrated.
- 7) **NO GUM, FOOD, CANDY, ETC.... 10 POINTS OFF**
- 8) The Choir Room is your “home” at school. Treat the Choir Room and your Choir Family with care and respect.
- 9) As a member of the Arlington High Choral Department, you stand for spirit, pride, class and tradition **INSIDE** the Choir Room and....more importantly.... **OUTSIDE** the Choir Room. Make a difference!!!! Be **AMAZING!!!**
- 10) Choose extraordinary over ordinary. Make the ordinary extraordinary. Never settle for mediocrity! **ALWAYS GO THE EXTRA MILE.**

You are awesome,

Mrs. Menger, Mrs. Pease, Ms. Hill

Note: **CHECK THE CHOIR CALL BOARD EVERYDAY.**

As a member of this department, these issues should not need to be re-iterated. You know what you need to do to be the best you can be.



“POINTS TO ME” Program

The Choral Program at Arlington High School is highly competitive - especially for Women. The “POINTS TO ME” system is one way to measure the level of involvement and commitment to our Choir Program. Each choir member is responsible for assembling points, which add up as the year progresses. When going through the audition process at the end of each year, points will be considered in helping to make the final decision in Choir placement. Other factors include Vocal Quality, Sight Reading ability, Grade History, Concert and Rehearsal attendance, Work Ethic and Year in School. The ultimate decision rests with the Choral Directors as any coach would choose players. Students can turn in points at any time by placing them in the mailbox or giving them to Mrs. Menger or Ms. Hill.

“POINTS TO ME”

All State Choir Camp	100
TMEA All State Audition	50
All State Mixed	200
All State Treble	150
All State Tenor/Bass	150
All State 1st Chair	500
Solo & Ensemble	50
Solo & Ensemble 1st Division	100
Section Leader	100
Extracurricular Ensembles	200
Sectional Attendance	50/each
Sectional Absence (unexcused)	-100
Voice Lessons (entire school year)	500
Summer Voice Lessons	250
Instrumental Lessons	250
Dance Lessons	250
Voice Recitals	50
Choir Officer	150
Special Vocal Performances	50
Choir Sponsored Functions	50/each
Parent/Student at Booster Mtgs.	50/each
Parent/Student at Open Houses	50/each
Other Choirs (Church, etc)	50
Volunteer Hours	10/each
Ineligibility any six weeks	-100
OCS, Choices, Turning Point	-500

“POINTS TO ME” is not the ultimate in the decision making process, but tends to show involvement, dedication and interest in the Arlington High Choral Department.

Concert Etiquette

Parents and Friends: We ask your help in assuring that our audiences come to our concerts and other performances knowing that each song being performed represents many hours of work and preparation. It is extremely important that our audiences remain quiet and attentive so that each choir member can perform with the utmost concentration and skill. Choral repertoire is performed in an acoustical setting and requires that each singer be able to hear themselves and others as they tune and harmonize with each other. Family and friends who come to support their chorister should not be distracted as they listen and enjoy the intimate beauty of the human voice. We also record our performances for our records, for sale and for educational evaluation. It is very disappointing to have a permanent recording of a concert marred by excessive audience noise, crying babies and crashing doors. With your help, we can create a very professional and "artist friendly" atmosphere at Arlington High School. We also expect our choir members to know how to be a wonderful and supportive audience member. Thank you for your help in "leading by example".

- 1) If you bring children to our concerts, please sit on the ends of the aisles and at the back of the auditorium. If they become restless, please quietly exit to the foyer immediately. The audience, choir and recording company will appreciate your thoughtfulness. When your child is once again calm, please feel free to re-enter the auditorium between numbers to enjoy the remainder of the concert. **PLEASE DO NOT LET YOUR CHILD STAY IN THE AUDITORIUM AND CRY. REMOVE THEM IMMEDIATELY!! THEY DO NOT UNDERSTAND THAT THEY ARE BEING EXTREMELY DISRUPTIVE. HELP THEM BY REMOVING THEM.**

I have raised three children of my own and have spent MANY performances outside with my child when they have become distressed. It is not fair to your child to let them sit and continue to cry or talk loudly while an auditorium full of listeners and performers is having their concert ruined. Please be understanding to both your child and to our listeners and performers. Thank you! Mrs. Menger

- 2) If you must leave during our concerts, we ask that you wait until a song is finished and the audience begins its applause. Exit quickly and please do not re-enter the auditorium until you again hear audience applause.
- 3) **IF YOU MUST BRING A CELL PHONE OR PAGER, PLEASE TURN IT OFF DURING THE ENTIRE CONCERT.** One of the many benefits of enjoying an evening of music is the opportunity to remove yourself from the hectic pace of everyday life and allow your spirit to be nurtured. This is our gift to you.
- 4) Please do not talk during a performance number. When the choristers have finished a piece and you feel the need to comment, do so by a warm round of supportive applause!
- 5) Please do not yell out and draw attention to your choir member or friend on stage. Congratulate your chorister at the end of the concert.
- 6) We ask that you not bring food or drink into our auditorium. We cherish this performance space because of its history and grand beauty. Help us keep it clean.
- 7) If someone in the audience is being unruly or disruptive, please find one of the VPs or House Volunteers.

With your help, we can make this year a truly artistic endeavor for both performers and audiences alike.

Concert Tickets

TICKETS WILL BE REQUIRED TO ENTER ALL CONCERTS. YOU MAY GET ONE FROM ANY CHOIR MEMBER FREE OF CHARGE. EACH CHOIR MEMBER WILL BE GIVEN 4 TICKETS AND CAN ASK FOR MORE. IF YOU DO NOT HAVE A TICKET AND WOULD LIKE TO COME TO THE CONCERT, YOU MAY CALL THE CHOIR BOX OFFICE AT (817) 459-2128 AND WE WILL HAVE A TICKET WAITING FOR YOU AT WILL CALL.

"Music is meaningless noise unless it touches a receiving mind."

-Paul Hindemith (1895-1963)

A Composer's World

Arlington Music Enrichment Program (AMEP)

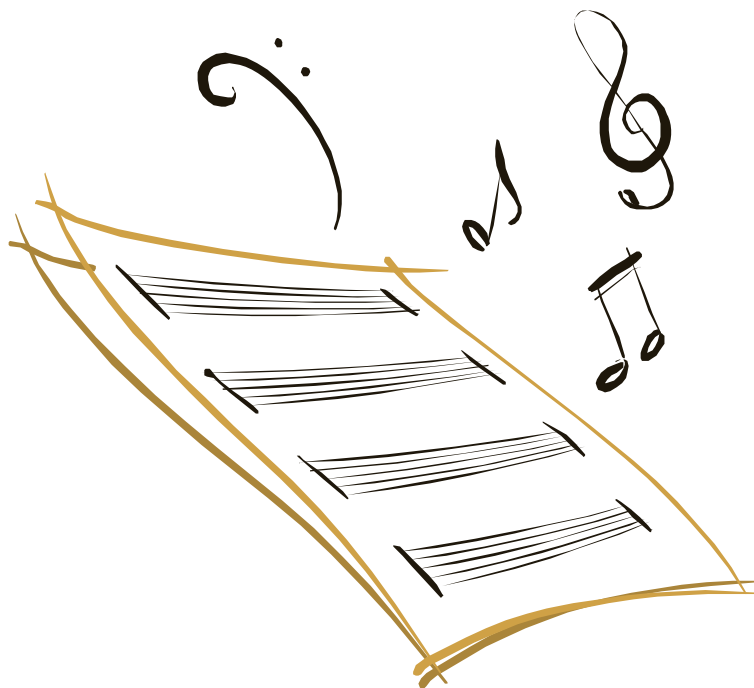
We are extremely fortunate to have on our campus very highly qualified voice instructors who work one on one with our students and provide vocal pedagogy, theory, and repertoire study. Students sing in Voice Recitals and Master Classes throughout the year and compete at UIL Solo & Ensemble Contests. Our voice instructors also help prepare TMEA All-State repertoire, musical and show choir audition material, and college audition repertoire. Each participating student receives one 25-minute lesson per week. The cost is \$16 per lesson. AMEP forms are available in Pam Wade's office. If you have any further questions, please contact Pam Wade, Vocal Chair, at (817)312-8538.

"Music is an inward retreat for the soul, and an outward expression of things that can only be expressed through music."

-Pam Wade

Voice Faculty:

Pam Wade and Natalie Mitchell



2008-2009 Arlington High Choir Department Calendar of Events

AUGUST

27	6:30-9:00 pm	COLT COUNTRY FAIR	CAFETERIA
----	--------------	-------------------	-----------

SEPTEMBER

6	8:00-5:00 pm	GET FIT DAY	AUDITORIUM
8	6:00-8:00 pm	AHS OPEN HOUSE	AUDITORIUM
11	7:00 pm	MANDATORY PARENT MTG.	AUDITORIUM
19	7:00 pm	HOMECOMING	MAVERICK STDM.
27	7:00-7:00	ALL STATE ROUND I	SEGUIN HS

OCTOBER

14	7:00 pm	FALL CHOIR CONCERT	AUDITORIUM
	6:30 pm	CHOIR CALL	TBA
18	10:00-2:00 pm	ALL STATE ROUND II	SUMMIT HS
25	7:00-10:00 pm	COSTUME BALL	CAFETERIA
27	5:00-10:00 pm	9 TH REGION AUDITION	LAMAR HS

NOVEMBER

8	8:00-10:00 pm	COLT CHOIR COFFEE HAUS	COURTYARD
13	7:00 pm	BOOSTER PARENT MTG.	CHOIR ROOM
21	3:00-6:00 pm	ALL STATE ROUND III	ARLINGTON HS
	7:30-9:00 pm	REGION CLINIC	ARLINGTON HS
22	8:00-3:30	REGION V CLINIC	ARLINGTON HS
	4:30 pm	9 TH /DISTRICT CONCERT	ARLINGTON HS
	7:00 pm	REGION CONCERT	ARLINGTON HS
26-30		THANKSGIVING BREAK	

DECEMBER

4	7:00 pm	BOOSTER PARENT MTG.	CHOIR ROOM
12, 13	7:00-10:00 pm	MADRIGAL FESTIVAL & DINNER	CAFETERIA & AUDITORIUM
22		WINTER BREAK BEGINS	

JANUARY

5		BACK TO SCHOOL	
10	7:00-7:00	ALL STATE ROUND IV	MIDLAND HS
16, 17	TBA	GEOFFREY BOERS CLINIC	CHOIR ROOM
19		MLK HOLIDAY	

FEBRUARY

3	7:00 pm	PRE-TMEA CONCERT	CATHEDRAL GUADALUPE
11-14		TMEA CONVENTION	SAN ANTONIO
13	1:30 pm	COLT CHORALE CONCERT	SAN ANTONIO
16		HOLIDAY	
21	8:00-5:00	SOLO & ENSEMBLE CONTEST	LEGACY HS
23	7:00 pm	CHAMBER SINGERS CONCERT	ST. ALBAN'S

MARCH

5	7:00 pm	BOOSTER PARENT MTG.	CHOIR ROOM
6	7:00 pm	SHOWCHOIR SHOWCASE	AHS AUDITORIUM
7	TBA	DISTRICT S & E CONTEST	ARLINGTON HS
9	6:00-8:00	AHS OPEN HOUSE	ARLINGTON HS
14	TBA	VOCAL QUARTET CONTEST	AUDITORIUM
16-20		SPRING BREAK CHOIR TRIP	TEXAS TOUR
28	7:00 pm	POP SHOW	AUDITORIUM

APRIL

11	9:00-12:00	CHOIR RISER REHEARSAL	AUDITORIUM
13	7:00 pm	PRE UIL CONCERT	AUDITORIUM
15, 16, 17	TBA	5A C & SR CONTEST	TRINITY HS
17	CAFETERIA	POST UIL PARTY	CAFETERIA

MAY

4		HOLIDAY	
7	7:00 pm	BOOSTER PARENT MTG.	CHOIR ROOM
16	7:00-11:00	CHOIR BANQUET	TBA
20	3:00-6:00 pm	CHOIR REHEARSAL	AUDITORIUM
21	7:00 pm	CHOIR SPRING CONCERT	AUDITORIUM
	6:00 pm	CHOIR CALL	TBA
25		HOLIDAY	
30		PROM	

JUNE

4	3:00 pm	GRADUATION PRACTICE	NOKIA
6	8:00 pm	AHS GRADUATION	NOKIA

* Colt Chorale traditionally sings at graduation

Arlington High School Choir Rules & Regulations

- 1) Be in your assigned seat with music and pencil when the bell rings (No music=10 points)
- 2) Do not talk during rehearsal unless directed to do so.
- 3) Do not chew gum or bring any kind of food, candy or beverage (except water) into the Choir Room (Gum, etc. =10 points)
- 4) Be an active participant in rehearsal! If you are unable to do this, consult with a director before class begins.
- 5) Check all dates for rehearsals, sectionals, concerts and other events on the choir calendar. Be there!! (Concerts = 30 POINTS OFF)

Consequences

1st Offense:	Verbal Warning
2nd Offense:	10 Points off
3rd Offense:	15 Points off/Parent Contacted
4 th Offense:	Parent Conference Discipline Referral to Assistant Principal 20 Points off
5th Offense:	Student removed to office Grounds for removal from Choir 30 Points off

Signature Page

-----Cut Here-----

I have read and understand the Arlington High School Choir Handbook. I have read and understand the Choir Rules and Regulations. I have checked all dates on the Choir Calendar and understand that I am required to attend all concerts and events that pertain to me. I agree to abide by these rules and regulations so that my choir may become as outstanding as possible.

STUDENT _____

PARENT _____

DATE _____

*****Please cut off the signed portion and return to the Choir Directors. Thank you.*****